

South Cape Bay & Fishers Point



Recherche Bay
Sheltered beaches.
30 min drive.

Cockle Creek Ranger Station.
National Park entry fees apply from here.
40 min drive.

Fishers Point,
Easy grade, views to Bruny Island and the Southern Ocean.
2 hrs return.

South Cape Bay
Easy grade, Very easy to follow. Stand on the cliffs overlooking the Southern Ocean and be the southernmost people in Australia. 5 hrs return.

South Cape Bay

At Cockle Creek, you enter Southwest national Park. Park entry fees apply. The easy, well made walk to the south coast takes about 2 hours each way. Fit, experienced walkers might like to continue to South Cape Rivulet or to Melaleuca, 6 days westward.

Fishers Point

A very easy walk along beaches and short sections of headland takes you to views of Bruny Island and the Southern Ocean. Watch out for snakes basking on the pebble beach at Fishers Point.

Free Far South Walks Guide

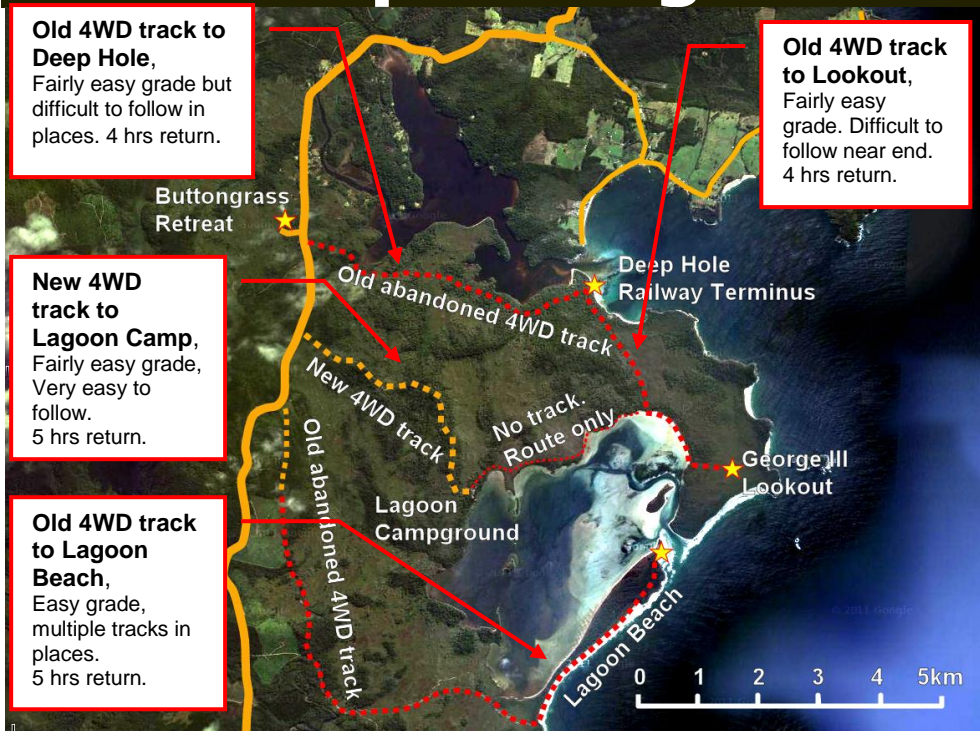
Feel free to take this guide with you on your walk or even take it home

... with compliments of

Buttongrass Retreat

Grasslands and mountain views in Tasmania's Far South

Southport Lagoon



Old 4WD track to Deep Hole,
Fairly easy grade but difficult to follow in places. 4 hrs return.

Old 4WD track to Lookout,
Fairly easy grade. Difficult to follow near end. 4 hrs return.

New 4WD track to Lagoon Camp,
Fairly easy grade, Very easy to follow. 5 hrs return.

Old 4WD track to Lagoon Beach,
Easy grade, multiple tracks in places. 5 hrs return.

These sketch maps are provided free of charge as a guide only. They form no contract with Buttongrass Retreat or its operators or any other person. You should use a full topographic map for navigation. Tracks are either operating or abandoned four wheel drive tracks and suit most people of good fitness with strong shoes. Routes are in a mix of open grasslands, shrubby gullies and woodland and suit fit, experienced bushwalkers with good navigation skills.

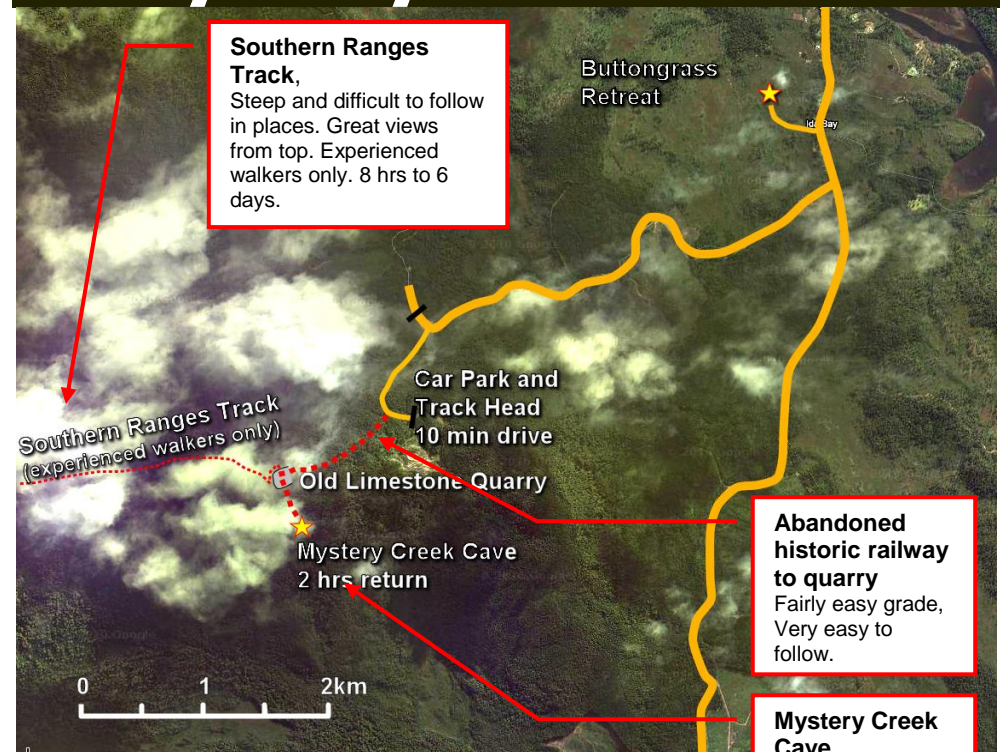
George III Lookout

Either walk from Ida Bay village or take the Ida Bay Railway to Deep Hole. From there, follow the signed old 4WD track to Southport Lagoon. The 4WD track finishes at the beach. From here, walk along the beach to the southern end. From here the walking track is a little difficult to follow, so you will need good navigation skills and a topographic map to find your way to the lookout.

Lagoon Campground

This new 4WD track can be travelled by foot, mountain bike or 4WD. It is easy to follow. The route from the campground to George III Lookout is through generally scrubby or fairly open country.

Mystery Creek Cave



Southern Ranges Track,
Steep and difficult to follow in places. Great views from top. Experienced walkers only. 8 hrs to 6 days.

Southern Ranges Track
(experienced walkers only)

Old Limestone Quarry

Mystery Creek Cave
2 hrs return

Abandoned historic railway to quarry
Fairly easy grade, Very easy to follow.

Mystery Creek Cave,
Fairly easy grade, steep near cave entrance. 3 hrs return.

Lagoon Beach

This old 4WD track is now closed to vehicles and can only be travelled by foot. It is generally easy to follow though braided in places. Southport Lagoon mouth and beach has strong currents and deep water. Swimming there is dangerous.

Mystery Creek Track

At the southern end of Ida Bay village, take the logging road to the right. About 3km follow the signs to the left. Park at the walker registration booth, then follow the old railway formation. In the abandoned limestone quarry, turn left, cross the quarry floor. Look carefully for the continuing track. Take care going down the slippery steep section to the cave entrance.



Buttongrass Retreat Grasslands and mountain views in Tasmania's Far South
Ph 6264 2233